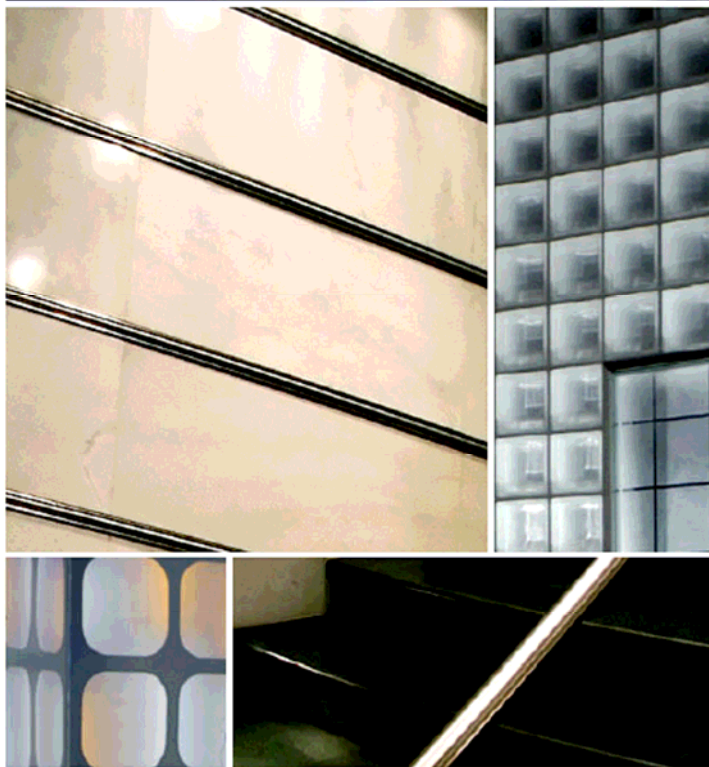


# Partnership with Masterspec



Schneider Electric are pleased to announce their recent partnership with Masterspec, the leading specification system in New Zealand's construction industry, providing detailed specification resources that can be easily modified to suit any project. The system is based on a range of generic and branded specification section templates. In April the PDL branded electrical specification section was released.

A 'branded specification section' is a complete work section based on the generic Masterspec format but customised to the requirements of the branded product(s). Branded product details, including accessories, relevant installation details, related documentation references, guarantees, etc., are fully integrated into a specification section. Once the branded specification section is completed the branded section is incorporated into all applicable Masterspec specification systems and distributed to subscribers. Subscribers, typically architects and consultants, access the specification sections mainly via the web and other available media.

For further information on the Masterspec system, or PDL specification section, please contact David Oakley at our Auckland office on 09 829 0688 or email [david.oakley@nz.schneider-electric.com](mailto:david.oakley@nz.schneider-electric.com)