

Imagine a Wiser™ Smart Home  
solution that puts you in control



[pdl.co.nz/wiser](http://pdl.co.nz/wiser)

Schneider  
Electric™



# Imagine how effortless life would be in a smarter home.

Imagine being in control of every aspect of your home – from the temperature to the lighting to your energy use – with just a few taps on your smartphone, or a few words to your voice assistant.

Imagine how comfortable you'd feel having everything set just how you like it, whenever you want. A secure feeling, knowing that you never have to worry about whether you have shut a door or

turned off an appliance and be at ease by monitoring in and around your home, wherever you are. And how environmentally sensitive and economical you'll be by using energy more efficiently.

Now imagine being in control of all aspects of your home easily and intuitively, with a simple yet powerful smart home solution that can grow to meet your changing needs.

Reimagine how you live  
with a PDL Wiser Smart Home solution.





# Welcome to your new, smarter home.

Taking charge of your home and taking the complications out of your daily life couldn't be easier with a PDL Wiser Smart Home. It's designed to be suitable for any home whether it's a new build or an existing home, allowing you to:

- Manage your lighting, blinds, appliances and more via an app, wherever you are.
- Create and schedule your own 'Moments', like movie nights or family dinners, where settings such as the lighting and blinds change to just how you like them.
- Set the lights and devices in your home office to power up with a pre-scheduled program before you start working, then go on standby when you're done.
- Let your home automatically anticipate your needs, reducing your living costs and environmental footprint.
- Choose how you control your smart home, with the Wiser by SE app, voice assistants or automatically.

Imagine all this control over your comfort, peace of mind and energy efficiency, right at your fingertips. With a PDL Wiser Smart Home, you can.



*"A smart home to me is a home that works for you. It adds some value and takes care of things so you don't have to think of them yourself. It enables you to concentrate on the important things; spending time with your family and enjoying life."*



# Imagine a smart home that's flexible and personalised to your lifestyle.

With a PDL Wiser Smart Home solution, your smartphone can become the dashboard for setting up and controlling your whole home. You can do everything from operating the blinds to changing the lighting remotely with the app, or even with your voice assistant.

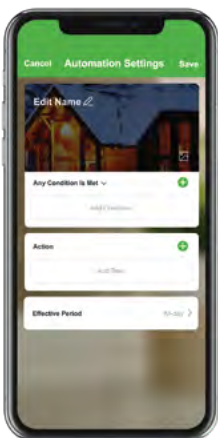


Tap  to add a new Moment

## Create personalised 'Moments'

Every household has its little rituals, and your PDL Wiser Smart Home can instantly set the mood for your special Moments. Whether setting the perfect ambiance for dinner time or dimming the lights and closing the blinds for movie nights, just set the Moment exactly how you want it once, then call up your saved settings next time.

Moments are an easy way to save your favourite settings for lighting, shade, and temperature in any room, and even control appliances like your TV or home entertainment system.



Tap  to add a new Automation

## Imagine the power of 'Automation'

With the Automation feature, you can fully customise the behaviour of your PDL Wiser Smart Home to suit your needs and have your home react to particular events. After you define your conditions and actions, your PDL Wiser Smart Home will automatically activate if the conditions are met. Imagine being able to set an Automation to turn your hallway lights on from 7pm to 9.30pm each night at 80% light level when a movement sensor is triggered so you and your family can more safely walk through your home.

## A smart home that grows as your needs do

From one smart function to a complete smart home, your PDL Wiser Smart Home features all the capabilities you need to start your smart home journey. Plus it's easy to scale up and add new devices to. You can start off with one or two smart room functions, like living room lights and bedroom window blinds, and affordably add to the system throughout the house as your needs change.





"I didn't realise how convenient it would be to be able to operate the blinds remotely or on an automated requirement."

# Seamless integration and control.

## Imagine a smart home solution that's simple to install and easy to use

With a PDL Wiser Smart Home, you're always in control. You can personalise your home to fit your needs and preferences, and manage it with one simple app.

Plus, if you've got a Google Home or Amazon Echo, you can control your PDL Wiser Smart Home with voice commands.



Alexa



Google Assistant



Siri



## Imagine controlling your home with just a few words

Voice control compatibility lets you set the lighting for a 'dinner' Moment without leaving the table, or activate a 'sleep' Moment in the kids' room while you're doing the washing up.



## Imagine looking like you're home when you're away

Going away for the long weekend but still want to have a presence at home? The Wiser by SE app allows you to control all or some of your blinds simultaneously, either on demand or automatically opening in the morning and closing at dusk.



PDL Wiser Smart Home products aren't just for new home builds, they are a simple solution that can easily be integrated into any home, old or new. All Wiser Smart Home products are also compatible with PDL's existing wiring devices, including the Iconic switch range, making design and function upgrades simple and seamless.

With a PDL Wiser Smart Home you can take control of your home the way that it suits you.

## Imagine making your movie nights cosier

Moments can be taken even further to let you turn your living room into a home cinema. For those family nights in front of a film, you can set a 'movie' Moment that lowers the lighting and closes the blinds so you can get ready to enjoy time with your family.



## Imagine those creature comforts on demand

You can create a Good Night Moment for a cosy night in. Start by closing the blinds around the house and turning all the lights off to set up the bedroom lighting, all from one button press or voice command.





"There's just a great peace  
of mind that I know what's  
happening in my home  
electrically wherever I am."





# Peace of mind.

## Imagine a safer kind of smart home

PDL Wiser offers solutions for greater peace of mind, helping protect your home from extreme weather, potential intruders or even the occasional moment of forgetfulness.

You can also integrate sensors to monitor several security parameters including door and window opening/closing, water leakage and motion detection.

Installing Wiser sensors as part of your smart home solution enables you to get warnings for any abnormal situations too, such as when motion is detected inside the house while you're away (noting that an "away mode" is not available in the current Wiser by SE app), or when there is water leakage, high levels of heat or even humidity are detected.



## Imagine improved remote security

Off on holiday? No worries, Wiser can switch lights on and off and open and close the blinds at preset times to provide a realistic impression you're at home. Set sensors to warn you if they detect motion or a change in status; such as a door or window being opened.



## Imagine exterior lighting when you need it

To help increase safety around the outside of your home, Wiser can activate outdoor lighting automatically when natural light falls below a set level at any time during the day.



## Imagine better control on hot days

Don't get caught off guard by the weather. The temperature sensor can alert you to when your home rises over a set level, and can enable you to turn on the air conditioning or shut the blinds, to keep the heat outside, and pets inside comfortable and cool.



## Imagine a smart smoke alarm

Helping to provide you added peace of mind the Wiser Smart Smoke alarm can send you push notification alerts on your phone if smoke is detected and Automations can be programmed to turn lights on at night to help wake you and give you more time to act in the event of a fire. Added confidence is also provided with optional test reminders, battery health checking and new smoke sensing technology that actually helps mitigate false alarms.



# Smart energy efficiency.

**Imagine a smart home solution that reduces both your energy costs and your carbon footprint**

Saving energy without making compromises may seem impossible, but it can be a reality with a PDL Wiser Smart Home. Whether starting a new build, or doing renovations, starting a Wiser Smart Home can be a simple yet wise investment for your future. You'll be able to create scheduled energy saving Moments and Automations that:

- Switch off devices that aren't being used.
- Turn off lights and heat lamps.
- Manage lights and blinds to match the sunrise and sunset, or changes in forecasted weather.
- Add and enable an 'away' Moment to switch off everything while you're out.



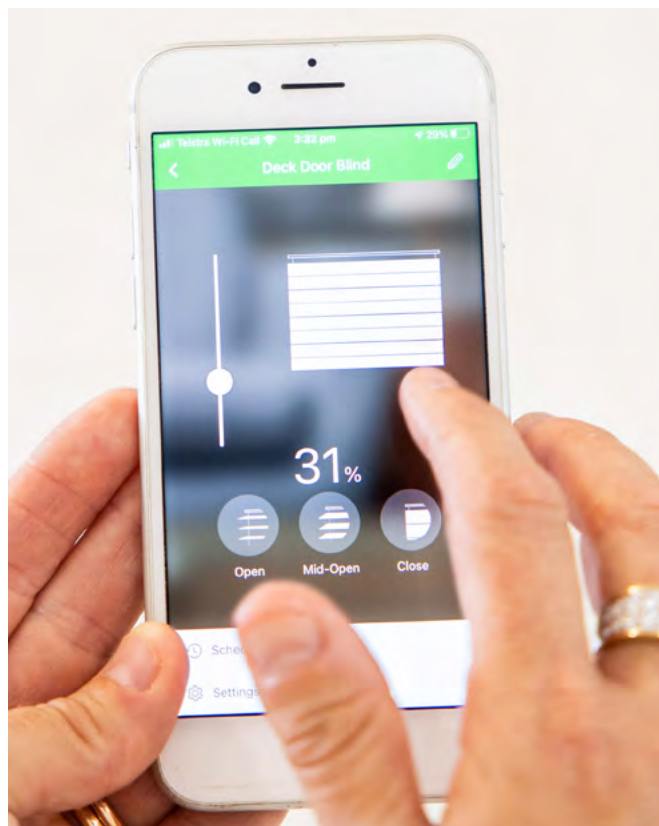
## Imagine wasting less energy

You never need to worry about whether the kids are leaving the heat lamps on again. Your PDL Wiser system can help to automatically turn them off.



## Imagine making keeping cool more affordable

To keep the house cooler on the hottest days, you can create an Automation to close all the blinds in a room, depending on the level of sunlight entering at that time of day, helping you manage your home's climate more efficiently.



## Imagine simple home appliance control

Gone out and left something on? Wiser lets you to turn off electrical appliances such as your iron or electric blanket remotely, giving you peace of mind.

You can automate your heated towel rail to come on just before your household likes to shower, and off again once you've finished so you can save on power.



## Imagine never having to remember to turn the lights off

Life is busy, and at times you'll walk into a room with your hands full, spaces like walk-in wardrobes, the laundry or the skullery. Using motion sensors in these areas can trigger lights to turn on and off automatically, meaning you won't be fumbling around to find the switch in the dark or dropping things. Plus your lights will never be left on by mistake.



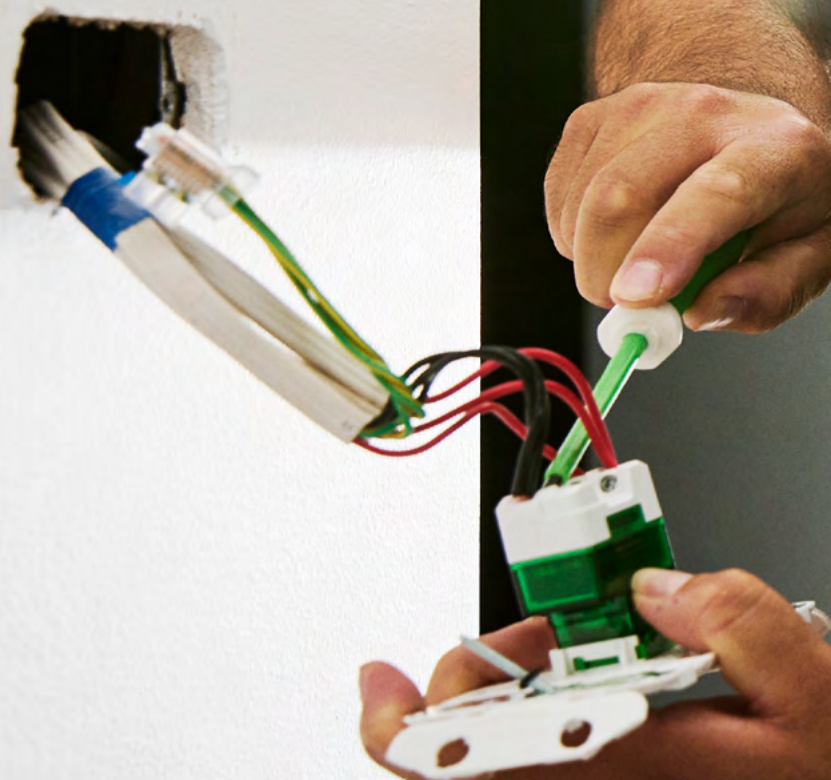


*"We tried to keep energy efficiency in mind when we built the house. To do that, it's essential that we don't have things on when they're not in use - Wiser helps us achieve that."*





"Our electrician that wired up the house is also a Wiser installer, so it was no trouble at all for him to add Wiser as we required. In fact we're continuing to add as we go."





# Imagine all of this brought to you by PDL.



## Robust connectivity and future-proofing

With PDL, you can be sure that as your requirements grow, your Wiser Smart Home solution will grow with you. With more than 30 years of experience in smart home innovation, our products are designed to scale and adapt to your changing needs.

## Proven technology and expertise

PDL Wiser brings together local know-how developed from 30 years of home automation experience with the world leading technology of Schneider Electric. As a global leader in digital transformation, Schneider Electric has been named as one of the World's Most Ethical companies by Ethisphere® Institute - so you can be reassured that your data and privacy is in good hands.

## Get support from PDL approved electricians

PDL Wiser Smart Home solutions are designed to be straightforward for a qualified electrician to install and connect. That's why we partner with trusted PDL Wiser Approved Installers to help ensure your PDL Wiser Smart Home is a great fit for you and installed correctly. Plus, you've got support from our customer service team and 24/7 access to a range of helpful online resources.

Approved Installer  
for Wiser™



To start your PDL Wiser Smart Home journey, visit [pdl.co.nz/wiser](https://pdl.co.nz/wiser) to learn more and find an approved PDL Wiser installer in your area.

# The scalable solution that grows as your needs do.

With multiple functions from a single system, your PDL Wiser Smart Home is a scalable and adaptable solution that can be easily tailored to your needs. It features digital, local and remote controls with connected switches, and you can manage it all with the Wiser by SE app on your smartphone.

Plus it's compatible with Amazon Alexa, Google Assistant and Siri<sup>^</sup>.



To make the system even smarter, a PDL Wiser Smart Home solution can also include connected sensors, giving your home even more efficiency, flexibility and intelligence.

If you already have or plan to have the Iconic switchgear range, it is simple and easy to upgrade to a PDL Wiser solution.

The experts at PDL are here to help you every step of the way, from design support through to assistance with finding an approved installer and use.

With simple, powerful smart home solutions to fit any requirements and budget, there's a PDL Wiser Smart Home solution that's perfect for your home.

## Control with



or



or



Local switch  
control

  
Voice Control

  
Wiser by SE App

To find out more, take our Wiser virtual home tour at [pdl.co.nz/wiser](https://pdl.co.nz/wiser)

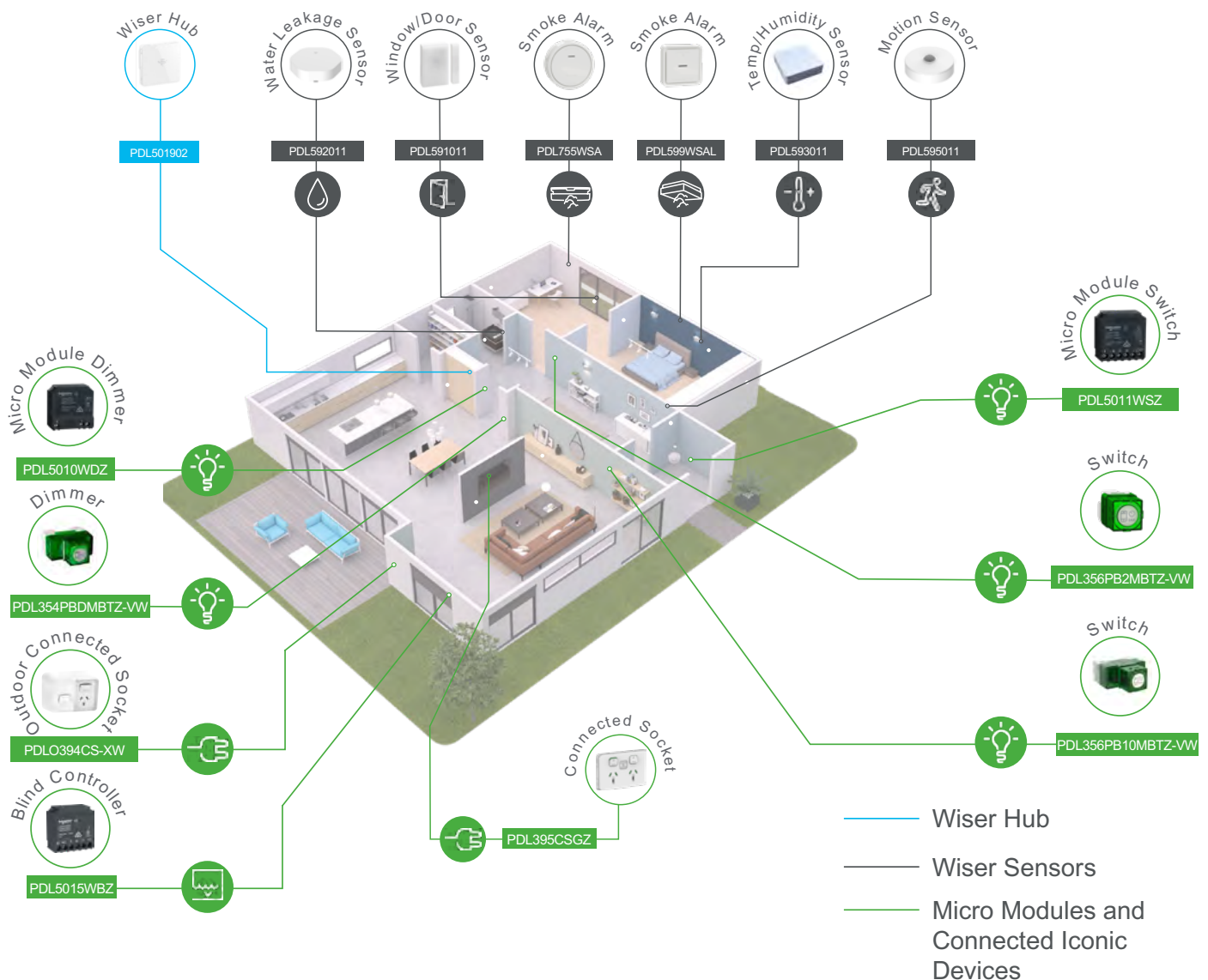
<sup>^</sup>Siri voice functionality is only currently available to trigger Moments.



# Imagine how Wiser could work in your home.

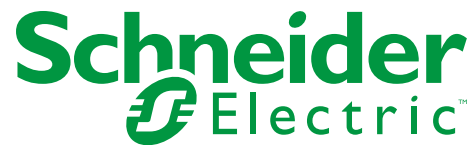
With PDL Wiser you can select from a range of smart devices and levels of control. You can start with just a few connected devices and add to the system as you go.

## Peace of mind



## Comfort and convenience

Start your smart home journey today, and discover how PDL Wiser can help you reimagine living. Call us on **0800 568 888** to talk to the experts about what you want from your smart home.



Find out more about PDL Wiser  
[pdl.co.nz/wiser](https://pdl.co.nz/wiser)

## **PDL**

PDL by Schneider Electric  
Level 2, Building 6, 60 Highbrook Drive,  
Auckland 2013, New Zealand

Siri voice functionality is currently available to trigger Moments. Increased functionality is in development.

If internet connection is lost to the Wiser Hub and a trigger/event is dependent on cloud access, then Wiser notifications and triggers may not run as planned during the internet outage.

©2026 Schneider Electric. All rights reserved. Life Is On Schneider Electric and Harmony are trademarks and the property of Schneider Electric SE, its subsidiaries and affiliated companies. All other trademarks are the property of their respective owners.

©2026 Google LLC. All rights reserved. Google and the Google logo are registered trademarks of Google LLC.

Apple is a trademark of Apple Inc.

Amazon, Alexa and all related logos are trademarks of Amazon.com, Inc. or its affiliates.

01/2026 - 998-22076298